





WELCOME TO HAWKRIDGE SOUTHWEST AUSTIN'S NEWEST LUXURY COMMUNITY

ROLLING HILLS. SCENIC VIEWS.
THOUGHTFUL ARCHITECTURE.
NATURAL BEAUTY.

HAWKRIDGE VISION

88 ACRES

EIGHTY EIGHT ACRES OF HILL COUNTRY
SERENITY. NAMED AFTER THE HAWKS THAT FLY
OVER THE RIDGE, THIS GATED COMMUNITY
BOASTS ESTATE-SIZED HOMESITES SPRAWLED
ACROSS 88 ACRES OF TRANQUIL ROLLING HILLS.



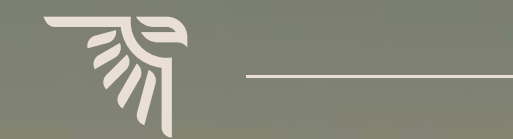
15 YEARS

KIRBY WALLS HAS BEEN BUILDING HOMES IN THE
DRIPPING SPRINGS AREA FOR OVER 15 YEARS.
HIS DEDICATION TO THE COMMUNITY HE LIVES
IN IS REFLECTED IN THE CARE AND QUALITY OF
HOMES HE BUILDS AND THE RELATIONSHIPS HE
HAS ESTABLISHED WITH LOCAL BUILDERS,
ARCHITECTS, TRADES AND SUPPLIERS.

SOUTHWEST AUSTIN

DEVELOPED BY KIRBY WALLS

HAWKRIDGE



TEXAS HILL COUNTRY

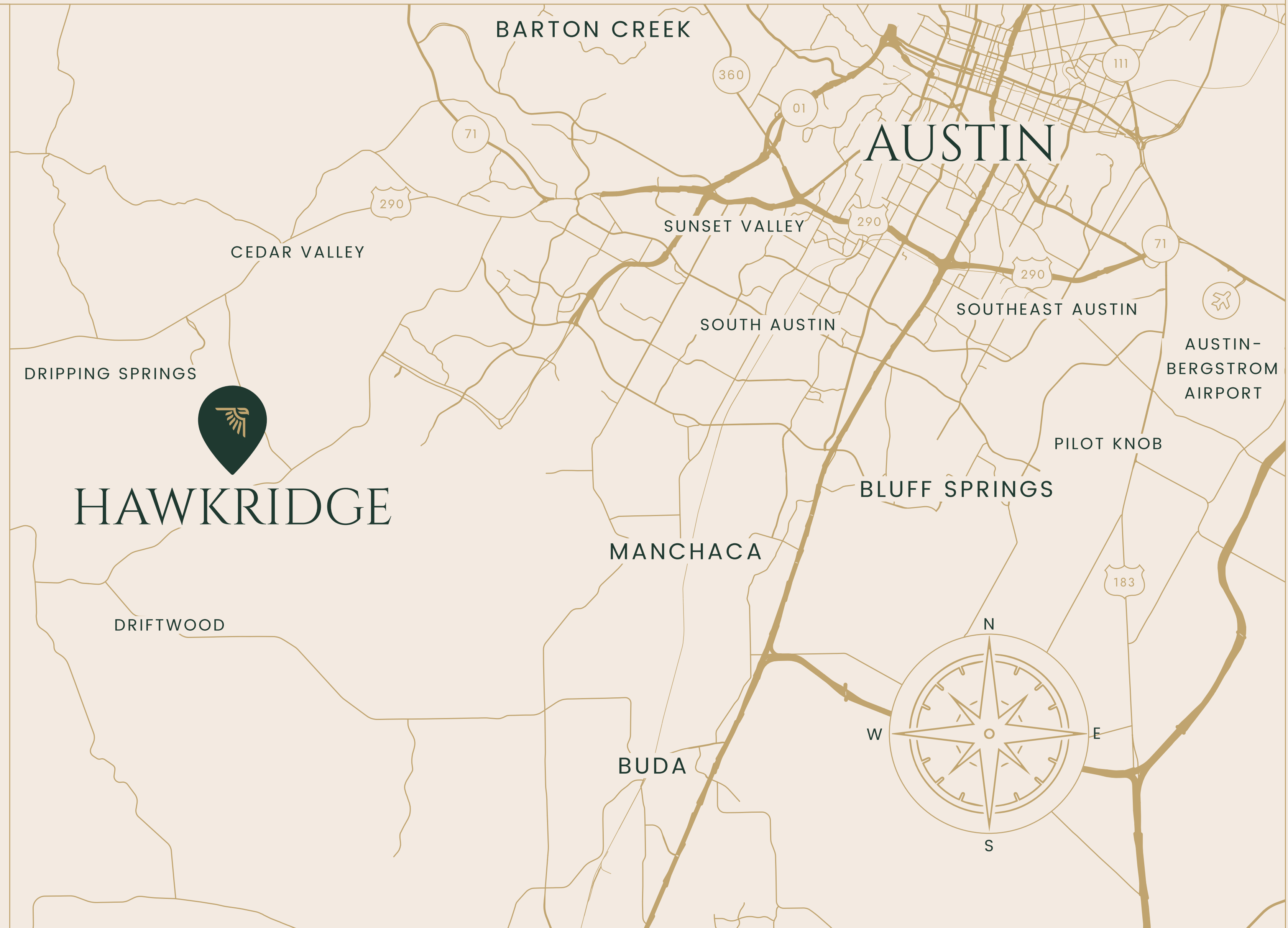
THE TEXAS HILL COUNTRY IS A BELOVED DESTINATION FOR NATURE LOVERS, OUTDOOR ENTHUSIASTS, HISTORY BUFFS, AND THOSE SEEKING A RELAXED AND SCENIC GETAWAY. ITS COMBINATION OF NATURAL BEAUTY, CULTURAL HERITAGE, AND RECREATIONAL ACTIVITIES MAKE IT A UNIQUE AND CHERISHED PART OF TEXAS.

THE REGION IS HOME TO NUMEROUS STATE PARKS AS WELL AS BEAUTIFUL RIVERS AND LAKES OFFERING OPPORTUNITIES FOR HIKING, CAMPING, KAYAKING, BOATING, AND OTHER OUTDOOR RECREATION. DURING THE SPRING, THE HILL COUNTRY TRANSFORMS INTO A VIBRANT CANVAS OF WILDFLOWERS. BLUEBONNETS, INDIAN PAINTBRUSHES, AND OTHER COLORFUL BLOOMS COVER THE FIELDS AND ROADSIDES, CREATING A STUNNING NATURAL SPECTACLE.

LOCATION

JUST 16 MILES FROM THE VIBRANT CITY OF AUSTIN.

THE COMMUNITY IS TIGHT-KNIT AND FRIENDLY, OFFERING A SENSE OF BELONGING AND A SLOWER PACE OF LIFE COMPARED TO NEARBY AUSTIN. THE RELAXED ATMOSPHERE AND EASY ACCESS TO NATURE IS WHAT DRAWS SO MANY TO THE AREA.





HILL COUNTRY LIFE

DRIPPING SPRINGS

DRIPPING SPRINGS IS KNOWN FOR ITS PICTURESQUE LANDSCAPES, ROLLING HILLS, AND STUNNING NATURAL SURROUNDINGS. THE AREA IS HOME TO NUMEROUS PARKS, GREEN SPACES, AND SWIMMING HOLES, PROVIDING RESIDENTS WITH AMPLE OPPORTUNITIES TO ENJOY OUTDOOR ACTIVITIES AND CONNECT WITH NATURE.



H A W K R I D G E

01.

SMALL-TOWN FEEL WITH A TIGHT-KNIT AND FRIENDLY COMMUNITY.

02.

ABUNDANT OUTDOOR ACTIVITIES LIKE HIKING, BIKING, CAMPING, AND HORSEBACK RIDING.

03.

CONVENIENT LIFESTYLE WITH NATURAL BEAUTY, AND EASY ACCESS TO NEARBY URBAN CENTERS.

04.

EMERGENCE OF LOCAL BUSINESSES, WINERIES, CRAFT BREWERIES, DISTILLERIES, AND UNIQUE SHOPS.

01.

HIGH QUALITY OF LIFE WITH GOOD HEALTHCARE FACILITIES AND A RANGE OF AMENITIES.

02.

EXCELLENT EDUCATION OPPORTUNITIES PROVIDED BY THE DRIPPING SPRINGS INDEPENDENT SCHOOL DISTRICT.



AUSTIN DRIPPING SPRINGS

03.

PROXIMITY TO AUSTIN, OFFERING ACCESS TO JOB OPPORTUNITIES, ENTERTAINMENT, AND A VIBRANT MUSIC AND FOOD SCENE.



THE AREA IS HOME TO NUMEROUS PARKS, GREEN SPACES, AND SWIMMING HOLES, PROVIDING RESIDENTS WITH AMPLE OPPORTUNITIES TO ENJOY OUTDOOR ACTIVITIES AND CONNECT WITH NATURE.

04.

DRIPPING SPRINGS IS KNOWN FOR ITS PICTURESQUE LANDSCAPES, ROLLING HILLS, AND STUNNING NATURAL SURROUNDINGS.





WE ARE FROM HERE, WE LIVE HERE

KIRBY WALLS

HAWKRIDGE FOUNDER &
CUSTOM BUILDER

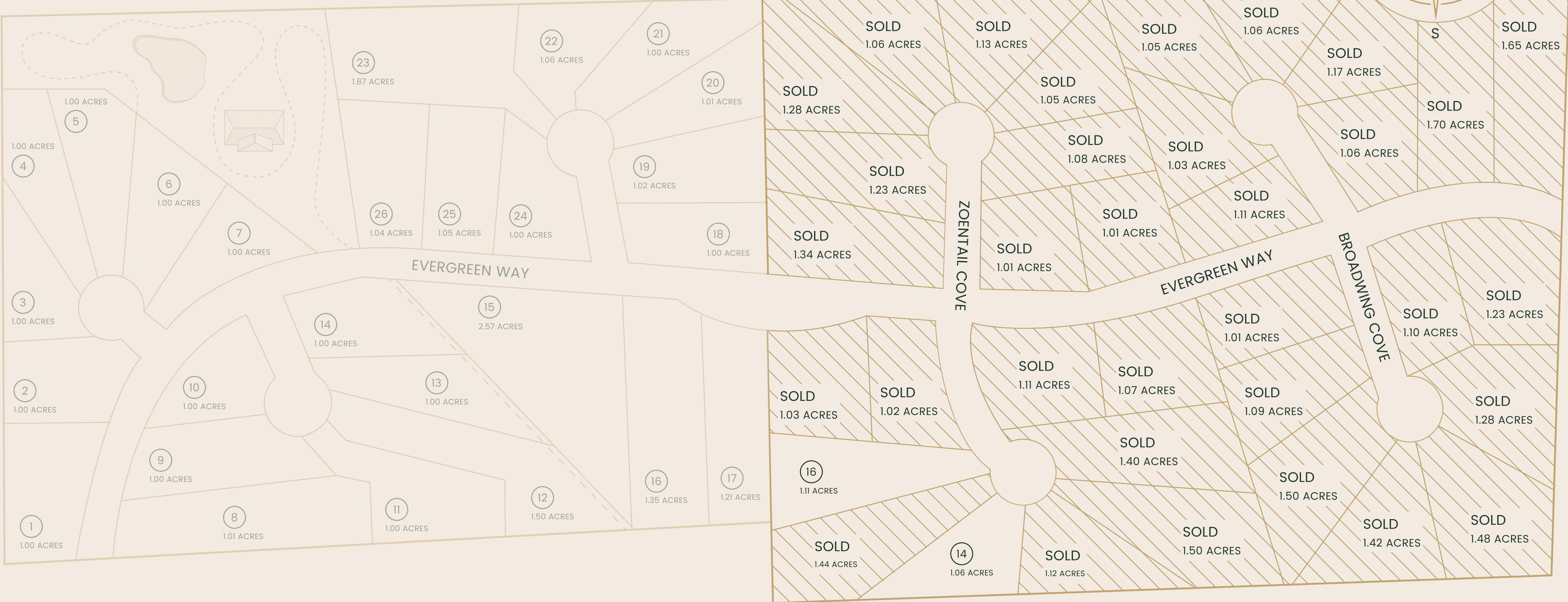
KIRBY WALLS IS A LOCAL WHO IS DEEPLY COMMITTED TO DRIPPING SPRINGS AND HAS THOUGHTFULLY DESIGNED HAWKRIDGE WITH A LIMITED AMOUNT OF 1+ ACRE LOTS CAREFULLY STRIKING A BALANCE BETWEEN THE FAST MOVING GROWTH IN THE AREA AND PRESERVING THE BEAUTY OF THE HILL COUNTRY.

HAWKRIDGE LOTS



PHASE 2*

PHASE 1



*PHASE 2 IS COMING SOON

ARCHITECTS

APPROVED ARCHITECTS

01

ALTERSTUDIO ARCHITECTS

CAMBRIDGE TOWER, 1801 LAVACA ST #106, AUSTIN, TX 78701, UNITED STATES

ALTERSTUDIO.NET

02

ANDREW WAGNER ARCHITECTS

14707 FITZHUGH RD B 100, AUSTIN, TX 78736, UNITED STATES

ANDREWWAGNERARCHITECTS.COM

03

CORNERSTONE ARCHITECTS

LLP. 7000 BEE CAVE ROAD, SUITE 200, AUSTIN, TEXAS 78746

CORNERSTONEARCHITECTSLLP.COM

04

DESIGN VISIONS OF AUSTIN

3503 WILD CHERRY DR BLDG 12, LAKEWAY, TX 78738, UNITED STATES

DESIGNVISIONSOFAUSTIN.COM

05

DICK CLARK + ASSOCIATES

2120 E 7TH ST STE 200, AUSTIN, TX 78702, UNITED STATES

DCARCH.COM

06

FURMAN + KEIL ARCHITECTS

1211 E 11TH ST STE 200, AUSTIN, TX 78702, UNITED STATES

FKARCHITECTS.NET

07

GESCHKE GROUP ARCHITECTURE

11200 RANCH RD 2222, AUSTIN, TX 78730, UNITED STATES

GESCHKEGROUP.COM

08

JAY CORDER ARCHITECT

2700 W ANDERSON LN. UNIT 309, AUSTIN, TX 78757, UNITED STATES

JAYCORDER.COM

09

LARUE ARCHITECTS

500 N CAPITAL OF TEXAS HWY BUILDING 8 SUITE 110, AUSTIN, TX 78746, UNITED STATES

ARCHITECTS.COM

10

VANGUARD STUDIO

6601 VAUGHT RANCH RD., SUITE 200AUSTIN, TX 78730

VANGUARDSTUDIO.COM





AMENITIES

GATED ENTRYWAY & LANDSCAPING

THE LANDSCAPE WILL REFLECT THE PHYSICAL AND BIOLOGICAL CHARACTER FROM THE SPRING FED VEGETATION OF THE EDWARDS PLATEAU, THE VAST MEADOWS OF THE POST OAK SAVANNAH, AND THE SEASONAL WILDFLOWERS OF THE BLACKLAND PRAIRIES. WITH THESE ELEMENTS COMBINED, THE INTENT IS TO CREATE A SERENE AND QUIET HAVEN FOR ALL RESIDENTS.

AN ENTRY EXPERIENCE THAT CREATES AN "AHH" MOMENT AS YOU ARRIVE HOME. THIS IS EMULATED BY CRAFTING A SPACE THAT'S NOT FORCED BUT FEELS TIMELESS AND UNIQUE. THE ELEMENTS WILL HONOR THE LOCAL AND REGIONAL VERNACULAR THAT DEFINED THIS SITE— ARCHITECTURAL MATERIALS OF AGED CORTEN, WEATHERED LIMESTONE, TEXTURAL CONCRETE, AND RIVER ROCK.

TRAILS

AMENITIES



— MILES OF HIKE AND BIKE TRAILS
PROVIDE RESIDENTS
OPPORTUNITIES FOR EXERCISE,
OUTDOOR EXPLORATION, AND
ENJOYING NATURE.



BARN & POND

AMENITIES



POND

THE POND WILL SERVE AS A FOCAL POINT, PROVIDING A PEACEFUL ATMOSPHERE AND A PLACE FOR RELAXATION.

BARN

LOCATED ALONG THE POND, THIS 2800 - 3000 SQUARE FOOT SINGLE STORY RUSTIC PARTY BARN WILL SERVE AS A HUB FOR GATHERING AND ACTIVITIES ORGANIZED BY THE COMMUNITY.

DRIPPING SPRINGS ISD

DRIPPING SPRINGS ISD IS A TOP RATED PUBLIC SCHOOL DISTRICT LOCATED IN DRIPPING SPRINGS.

THE DISTRICT'S SCHOOLS STRIVE TO PROVIDE A COMPREHENSIVE EDUCATION THAT SUPPORTS STUDENTS' ACADEMIC, SOCIAL, AND EMOTIONAL DEVELOPMENT.

DRIPPING SPRINGS ISD IS COMMITTED TO ACADEMIC EXCELLENCE AND OFFERS A RIGOROUS CURRICULUM DESIGNED TO PREPARE STUDENTS FOR COLLEGE AND CAREER SUCCESS. THE DISTRICT FOCUSES ON PROVIDING A WELL-ROUNDED EDUCATION THAT INCLUDES CORE SUBJECTS, ADVANCED COURSES, AND A RANGE OF EXTRACURRICULAR ACTIVITIES.



01

ACTIVITIES



DSISD OFFERS A VARIETY OF EXTRACURRICULAR ACTIVITIES, INCLUDING SPORTS, CLUBS, FINE ARTS, AND ACADEMIC COMPETITIONS. THESE ACTIVITIES PROVIDE OPPORTUNITIES FOR STUDENTS TO EXPLORE THEIR INTERESTS, DEVELOP THEIR TALENTS, AND ENGAGE IN TEAMWORK AND LEADERSHIP EXPERIENCES.

02

INVOLVEMENT



DSISD VALUES COMMUNITY INVOLVEMENT AND COLLABORATION. THE DISTRICT ENCOURAGES ACTIVE PARTICIPATION FROM PARENTS, FAMILIES, AND COMMUNITY MEMBERS, FOSTERING A STRONG SENSE OF PARTNERSHIP IN SUPPORTING STUDENT SUCCESS.

03

RESOURCES



DSISD STRIVES TO PROVIDE MODERN FACILITIES AND RESOURCES TO ENHANCE THE LEARNING ENVIRONMENT. THE DISTRICT CONTINUOUSLY INVESTS IN TECHNOLOGY, INFRASTRUCTURE, AND INSTRUCTIONAL MATERIALS TO SUPPORT EFFECTIVE TEACHING AND LEARNING.

04

APPROACH



DSISD RECOGNIZES THE IMPORTANCE OF STUDENT WELL-BEING AND EMPHASIZES A HOLISTIC APPROACH TO EDUCATION. THE DISTRICT PRIORITIZES THE SOCIAL AND EMOTIONAL HEALTH OF STUDENTS, PROVIDING SUPPORT SERVICES AND PROGRAMS THAT PROMOTE A POSITIVE AND INCLUSIVE SCHOOL CULTURE.



HAWKRIDGE



GET IN TOUCH

PLEASE FEEL FREE TO REACH OUT TO US WITH ANY QUESTIONS OR CONCERNS YOU MAY HAVE. DON'T HESITATE TO CONTACT US ANYTIME.

EMAIL

INFO@HAWKRIDGEAUSTIN.COM

ADDRESS

EVERGREEN WAY, TEXAS 78737

WEBSITE

WWW.HAWKRIDGEAUSTIN.COM